

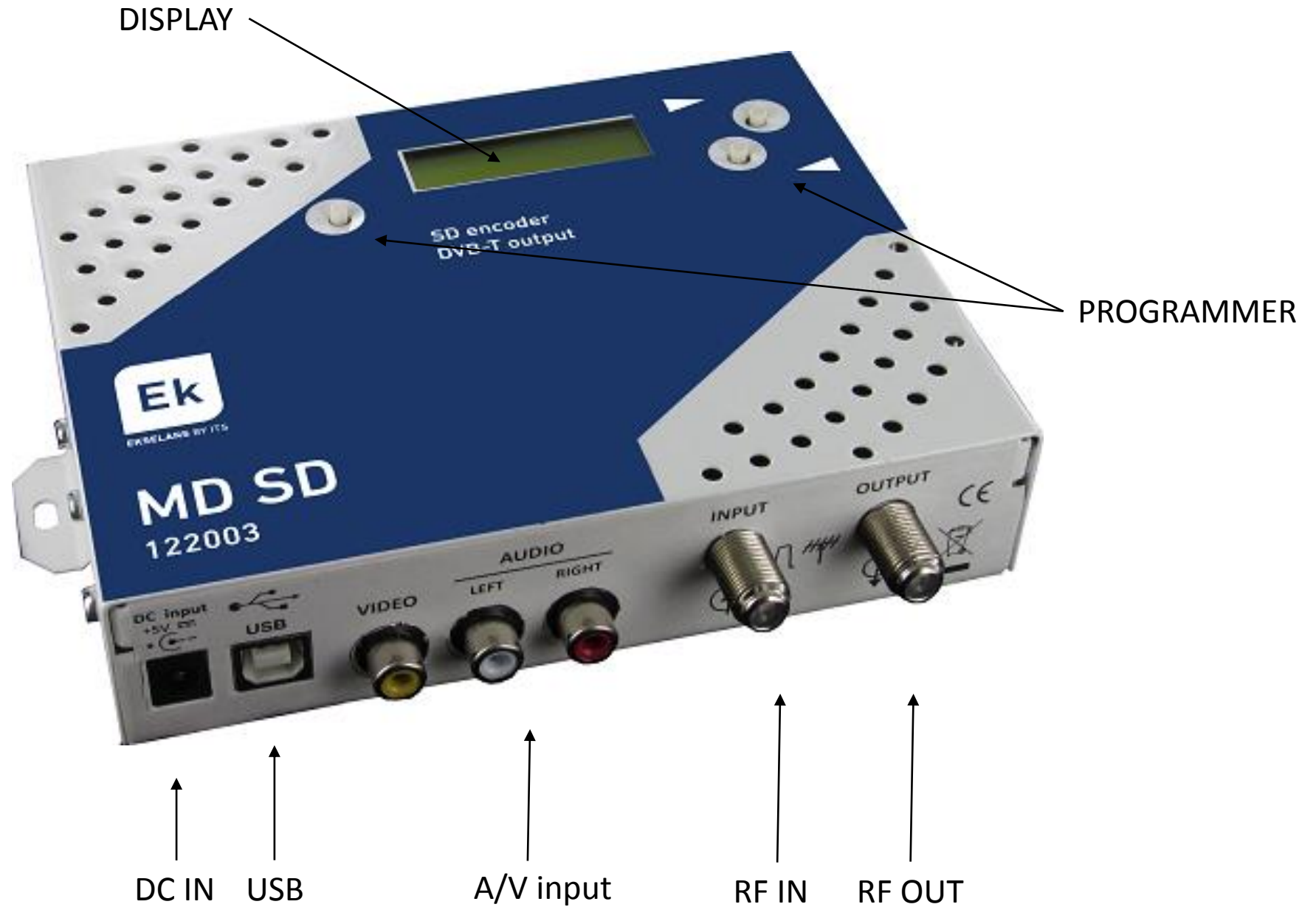
MD SD

122003

**Manual de usuario
Manuel d'installation
Manuale d'uso
Manual d'instruções
User's manual**



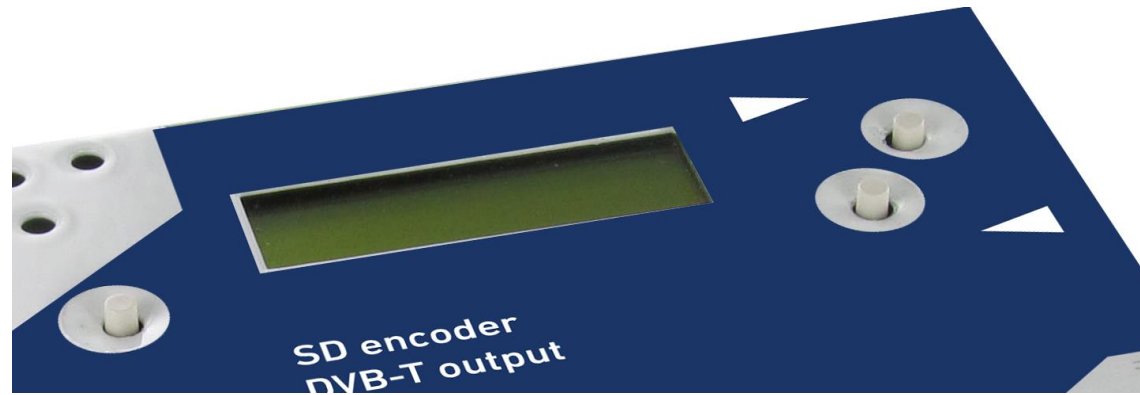
MD SD



Funciones del programador
Fonctions du programmateur

Funzioni del programmatore
Funções do programador

Programmer function



ES

FR

IT

PT

EN

Aceptar (Enter)

Accepter (Enter)

Accettare (Enter)

Aceitar (Enter)

Enter

Desplazamiento izquierda a través de las opciones de los submenús

Déplacement gauche à travers les options du sous-menu

Spostamento sinistra nelle opzioni dei sottomenu

Mover esquerda nas opções de submenus

Left movement through submenus options

Desplazamiento derecha a través de las opciones de los submenús

Déplacement droite à travers les options du sous-menu

Spostamento destra nelle opzioni dei sottomenu

Mover direita nas opções de submenus

Right movement through submenus options

MENU

OUTPUT

Frequency

Guard Interval

Attenuation

Audio rate

Bandwidth

Video rate

Mode

LCN

Constellation

Channel name

FEC

Return

Parámetros de la señal
digital modulada

INPUT

Standard

Format

Light

Contrast

Saturation

Return

Parámetros de la señal
audio / vídeo de entrada

EXTRA

NIT Version

TS ID

Program ID

ONID

Network ID

Network Name

PMT PID

Video PID

Audio PID

Return

Parámetros del transport
stream del servicio digital
modulado

MISC

Language

Reset

Return

Selección del idioma y
reset

MENU

OUTPUT

Frequency

Guard Interval

Attenuation

Audio rate

Bandwidth

Video rate

Mode

LCN

Constellation

Channel name

FEC

Return

Paramètres de service
numérique modulé

INPUT

Standard

Format

Light

Contrast

Saturation

Return

Paramètres du signal audio
et vidéo

EXTRA

NIT Version

PMT PID

TS ID

Video PID

Program ID

Audio PID

ONID

Return

Network ID

Network Name

Paramètres du transport
stream du service
numérique modulé

MISC

Language

Reset

Return

Sélection de la langue et
reset

MENU

OUTPUT

Frequency

Guard Interval

Attenuation

Audio rate

Bandwidth

Video rate

Mode

LCN

Constellation

Channel name

FEC

Return

Valori del segnale digitale
modulato

INPUT

Standard

Format

Light

Contrast

Saturation

Return

Parametri dei segnali
audio / video

EXTRA

NIT Version

PMT PID

TS ID

Video PID

Program ID

Audio PID

ONID

Return

Network ID

Network Name

Parametri del transport
stream del servizio digitale
modulato

MISC

Language

Reset

Return

Selezione della lingua e
reset

MENU

OUTPUT

Frequency

Guard Interval

Attenuation

Audio rate

Bandwidth

Video rate

Mode

LCN

Constellation

Channel name

FEC

Return

Parâmetros do serviço
modulado

INPUT

Standard

Format

Light

Contrast

Saturation

Return

Parâmetros de áudio /
vídeo

EXTRA

NIT Version

PMT PID

TS ID

Video PID

Program ID

Audio PID

ONID

Return

Network ID

Network Name

Parâmetros do transport
stream do serviço
modulado

MISC

Language

Reset

Return

Seleção da língua / reset

MENU

OUTPUT

Frequency

Guard Interval

Attenuation

Audio rate

Bandwidth

Video rate

Mode

LCN

Constellation

Channel name

FEC

Return

Output digital signal
parameters

INPUT

Standard

Format

Light

Contrast

Saturation

Return

Audio / Video signal
parameters

EXTRA

NIT Version

PMT PID

TS ID

Video PID

Program ID

Audio PID

ONID

Return

Network ID

Network Name

Transport stream
parameters

MISC

Language

Reset

Return

Language selection and
reset

Notas de interés

1. El MDSO se puede programar mediante un software para PC (MDSOsoft). Se puede descargar de nuestra web www.ekselansbyits.com
2. Una vez instalado, conectar el MD SD al PC mediante un cable USB y ejecutar el programa. En el display del MDSO aparecerá "USB" y en el PC la siguiente ventana

Notes complémentaires

1. Le MDSO peut être programmé par un logiciel PC (MDSOsoft). Il peut être téléchargé à partir de notre site web www.ekselansbyits.com
2. Une fois installé, connectez le MDSO au PC via le câble USB et lancez le programme. L'écran affiche le message USB et sur le PC, la fenêtre suivante apparaît

Note addizionali

1. Il prodotto può essere programmato tramite un software per PC (MDSOsoft). È disponibile nel nostro sito www.ekselansbyits.com
2. Dopo aver installato il programma, collegare l'MDSO mediante un cavo USB al PC ed eseguire il software. Apparirà "USB" scritto sul display dell'MDSO e la seguente finestra sul PC

Notas adicionais

1. MDSO pode ser programado por software para PC (MDSOsoft). Descarregar o programa a partir de nosso web www.ekselansbyits.com
2. Uma vez instalado, conecte o MD SD ao PC via cabo USB e execute o programa. O visor mostra o mensagem "USB" e seguinte janela no PC

Additional notes

1. MDSO could be programmed by PC software (MDSOsoft). It can be downloaded from site www.ekselansbyits.com
2. Once it's installed, connect MDSO to PC using a USB cable and launch the software. The word "USB" shall appear on product display and following window on PC

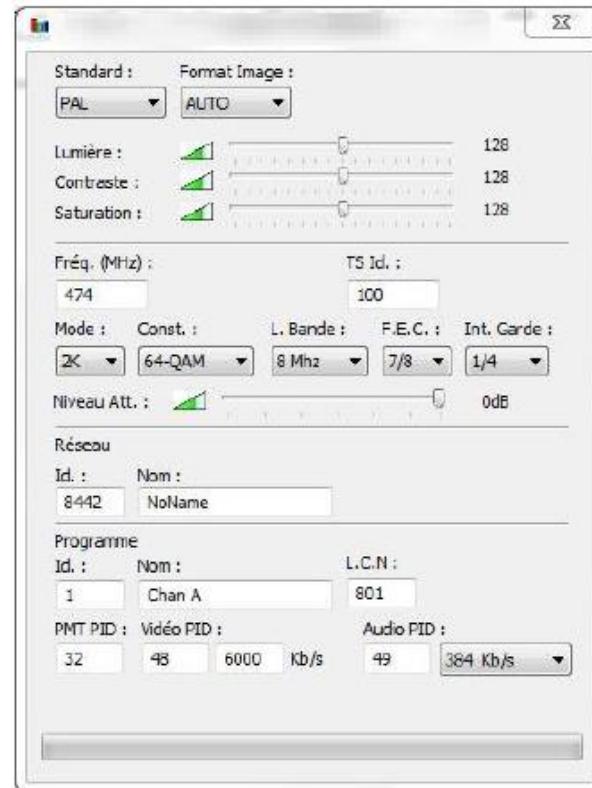


Tabla de canales y frecuencias
Tableau de canaux et fréquences

Tabella frequenze e canali DVB-T
Tabela de canais e frequências

Frequency and channels table

	Channel	Central frequency (MHz)		Channel	Central frequency (MHz)		Channel	Central frequency (MHz)		Channel	Central frequency (MHz)
BI	2	50,5	Hyper band	S21	306	B I V	C21	474	BV	C38	610
	3	57,5		S22	314		C22	482		C39	618
	4	64,5		S23	322		C23	490		C40	626
S low	S1	107,5		S24	330		C24	498		C41	634
	S2	114,5		S25	338		C25	506		C42	642
	S3	121,5		S26	346		C26	514		C43	650
	S4	128,5		S27	354		C27	522		C44	658
	S5	135,5		S28	362		C28	530		C45	666
	S6	142,5		S29	370		C29	538		C46	674
	S7	149,5		S30	378		C30	546		C47	682
	S8	156,5		S31	386		C31	554		C48	690
	S9	163,5		S32	394		C32	562		C49	698
	S10	170,5		S33	402		C33	570		C50	706
BIII	5	177,5		S34	410		C34	578		C51	714
	6	184,5		S35	418		C35	586		C52	722
	7	191,5		S36	426		C36	594		C53	730
	8	198,5		S37	434		C37	602		C54	738
	9	205,5		S38	442					C55	746
	10	212,5		S39	450					C56	754
	11	219,5		S40	458					C57	762
	12	226,5		S41	466					C58	770
S high	S11	233,5								C59	778
	S12	240,5								C60	786
	S13	247,5								C61	794
	S14	254,5								C62	802
	S15	261,5								C63	810
	S16	268,5								C64	818
	S17	275,5								C65	826
	S18	282,5								C66	834
	S19	289,5								C67	842
	S20	296,5								C68	850
										C69	858



Ekselans by ITS is a registered trademark of
ITS Partner (O.B.S.) S.L.
Av. Corts Catalanes 9-11
08173 Sant Cugat del Vallés (Barcelona)
www.ekselansbyits.com

